

Barns, Bars and more



Presenter



Tom Jenson

DSFM Code Specialist

Minnesota State Fire Marshal

651.201.7221

Thomas.Jenson@state.mn.us

Presenter



Kevin McGinty
Deputy State Fire Marshal
Minnesota State Fire Marshal
651-201-7219
Kevin.McGinty@state.mn.us

Today's Objectives

Not Going to make you a Code Expert in
60 minutes!

Not even going to cover everything

***Just Giving an Overview, a Look at the
Issues and a Place to get Help***

Role of State Fire Marshal

- **State Fire Marshal Division (SFMD)**
 - **Developing and overseeing the Fire Code**
 - **Provide interpretations on fire code and related issues**
 - **Perform inspections:**
 - Mandated by statutes
 - Investigations of incidents
 - By request

What's Already Being Inspected

- **State Fire Marshals Division Inspects**
 - **Public Schools – Charter Schools**
 - **Hotel/Motel/Resorts**
 - **Day Care/Foster Care**
 - **Health Care – Hospitals/Nursing Homes**
 - **Complaints & Requests**

Barn Conversions



Bars – Drinking & Dining



Nightclubs



Places of Worship



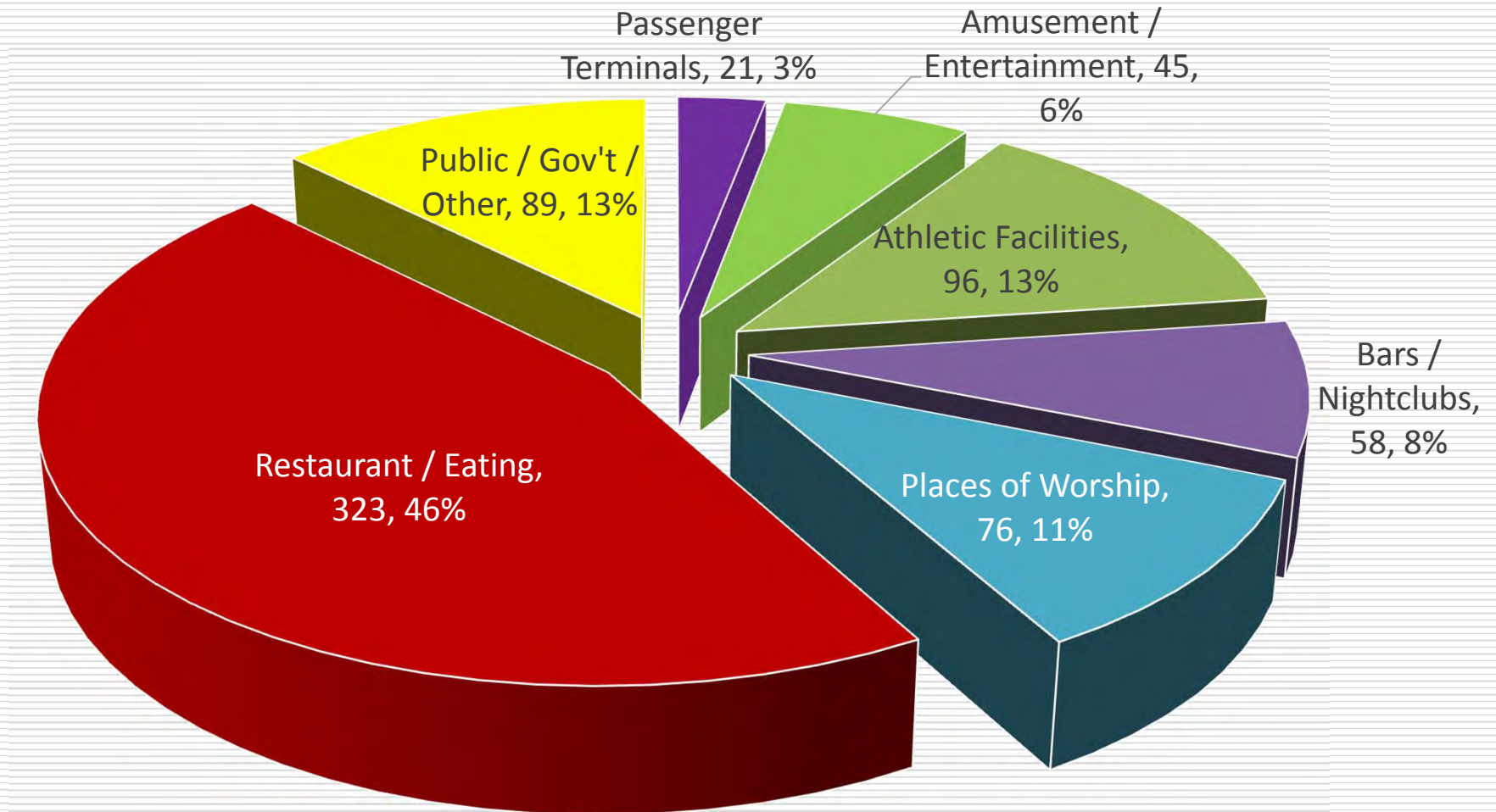
What is Group A

Simply put...Buildings or outdoor venues where 50 or more persons assemble to participate in or observe an activity

Assembly Occupancies

- Group A-2 includes occupancies in which people congregate in high densities for social entertainment
 - **Where drinking and/or food consumption takes place**
- Group A-3
 - **No consumption of food or drink**

Assembly Fires by Type of Occupancy 2011-2015



Lessons Learned ?

Same code issues throughout history

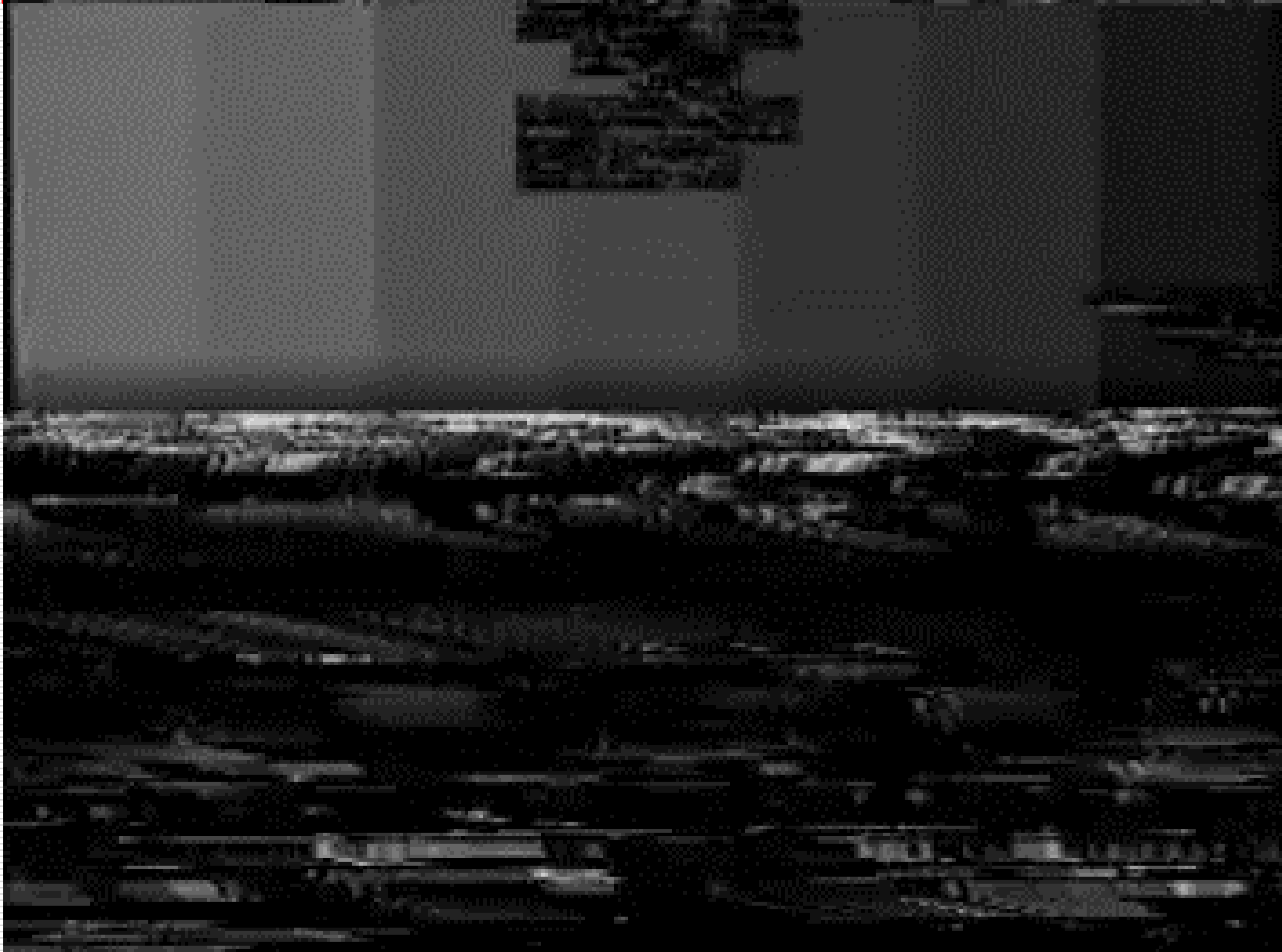
- **The “Big Six” in fire tragedies**
 - Interior finishes
 - Vertical openings
 - Fire suppression systems
 - Fire alarms
 - Exits
 - Storage



History of Group A-1 & A-2 Tragedies

- Iroquois Theater, 12.30.1903, 602+
- Rhythm Club, 4.23.1940, 209
- Cocoanut Grove Club, 11.28.1942, 492
- Station Nightclub, 2.20.2003, 100
- Republica Cromanon, 12.30.2004, 194
- Brazil Kiss nightclub 1.27.2013, 242
- Rouen France, 8.6.2016, 13

Station Night Club



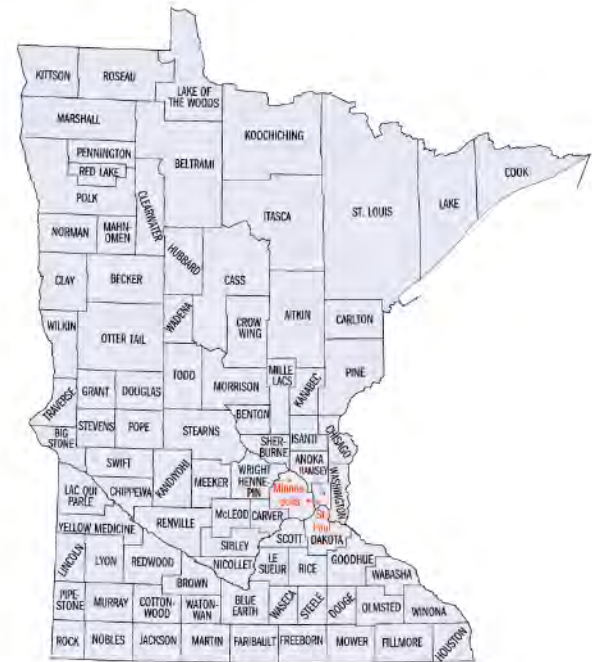
Fire Code Statute

299F.011 Subd. 4. **Applicability; local authority.**

The State Fire Code shall be applicable throughout the state and in all political subdivisions and municipalities therein..

Fire Code Statute

- **299F.011 subd. 4 Applicability**
- Is enforceable throughout the state.
- Not necessary to adopt
- Local Ordinance for:
 - Ease of enforcement.
 - Modify Code



Code Official

- State Fire Marshal
 - Authorized representatives
- Fire Chief
 - Authorized representatives
- Other authority
 - By ordinance or regulation
- Must be competent
 - Inspector certs, training, experience

Design Professionals

- Architect is required
- Mn Statute 326.02 - 326.15
- Mn Rule 1800.5200

It's not just about sprinklers

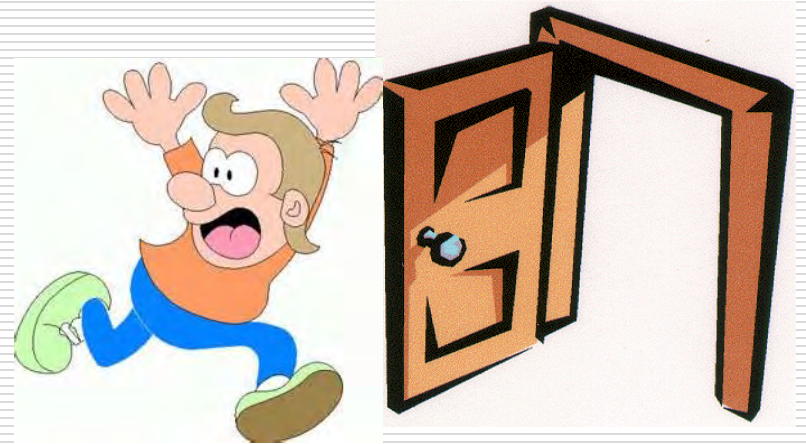
- Exits
- Interior Finish
- Fire Alarms
- Fire Sprinkler Systems
- Ignition Sources
- Emergency plan, crowd managers

Occupant Load

- Complicated in Group A
- Drives the number of exits
- Drives exit width
- Sprinkler and fire alarm requirements

Number of Exits

- 50 or more occupants
 - At least 2 exits
 - Lighted exit signs
 - Emergency lighting
 - Panic Hardware
 - Door Swing



Exit Advice?



Interior Finishes

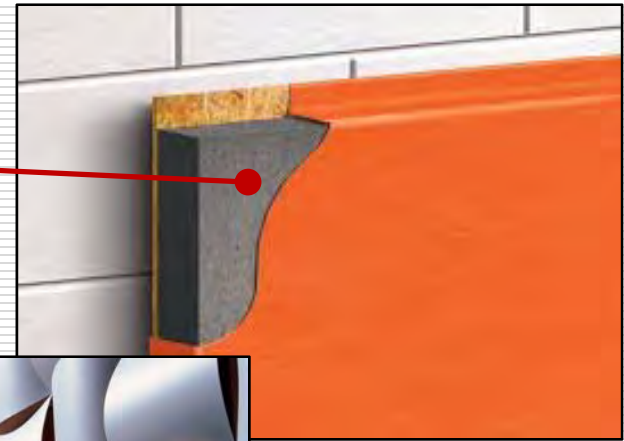
Foams – Plastics

Carpet

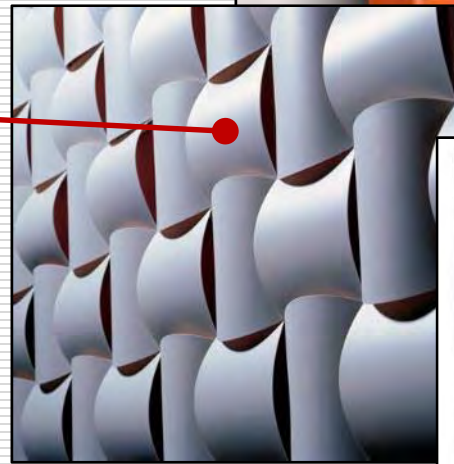


Plastics as Interior Finish

Foam plastics



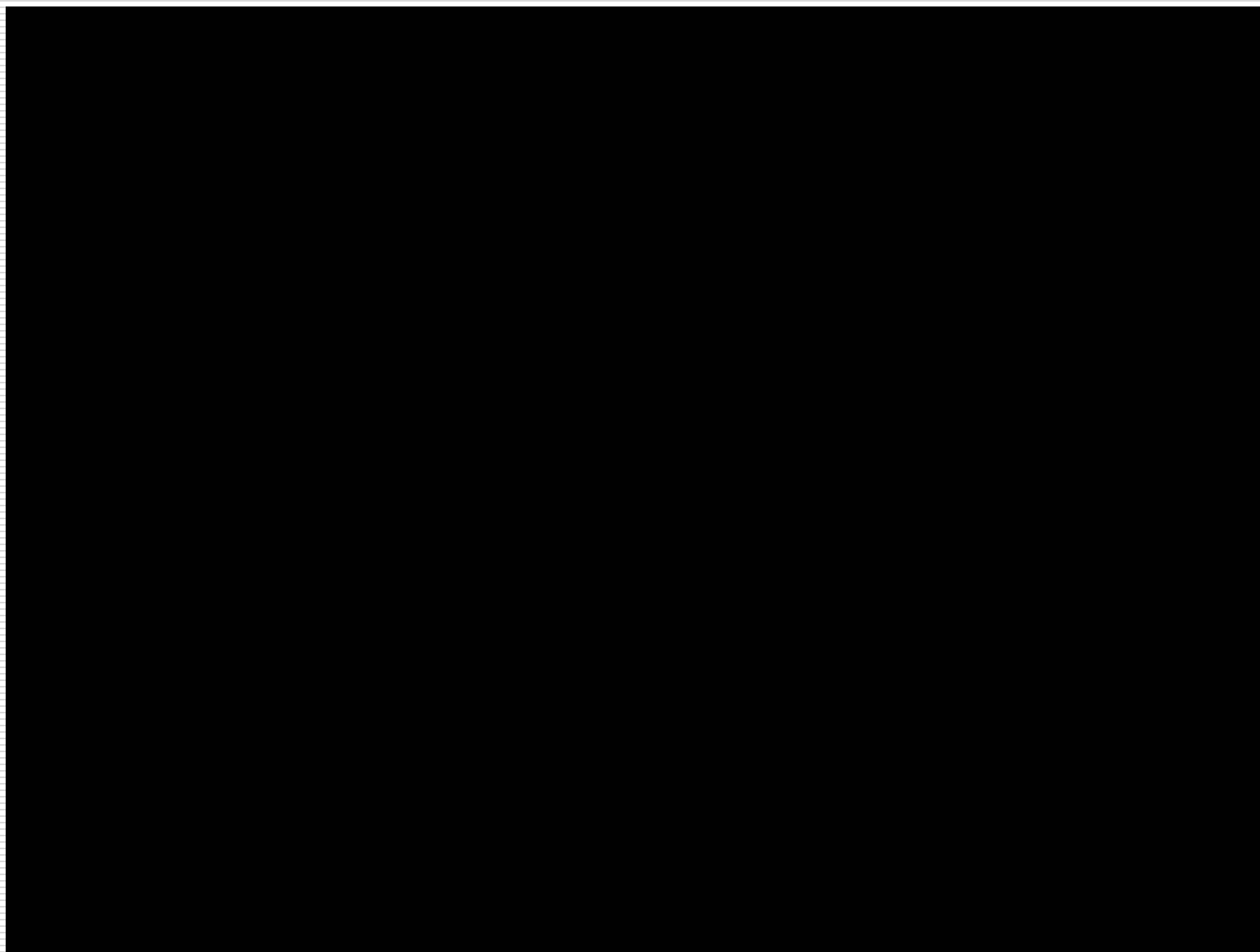
Polypropylene



High density polyethylene



Foam Fire Test



Sprinkler Requirements

- *A-2 fire area*
 - **5,000 sf**
 - **100 people**
 - **Second story or basement**
- *A-3 fire area*
 - **12,000 sf**
 - **300 people**
 - **Second story or basement**

Barn Conversions



Group U becomes Group A



What are the code concerns?



Barn Conversions



What Makes Us Unique

- Roughly 10,000 square feet of barn - TONS of space indoors as well as huge covered outdoor areas!
- 300 guests are welcome
- DJ/Band can play until 12am
- Choices! Ceremonies can be held in front of our massive maple tree, in the upper level of the barn, in a grassy field surrounded by trees with a lake view, in the pavillion, or in the courtyard
- Three options for where you'd like cocktail hour: 1) the remains of the granary provide an in-ground stone structure with an open roof and cascading vines 2) in the pavillion to remain outdoors but covered 3) The reclaimed beams of the lower level of the barn and the high top stanchion tables provide a fresh industrial vibe
- The scenery cannot be beat: lush fields, gorgeous mature trees, and Bloom's Lake
- We LOVE weddings and will strive to make your day just as you imagine!



Engineering Design

- Additions such as decks
- Stairways
- Roof snow loads

Decks



Bars – Drinking & Dining

- Existing
 - **Definition**
 - **Sprinklers - Basements**
 - **Exits and Signs**
 - **Panic Hardware**
 - **Emergency Lighting**
 - **Interior Finish**

Bars – Drinking & Dining

- New
 - **Definition**
 - **Sprinklers**
 - **Exits Lighting**
 - **Interior Finish**
 - **FD Access**
 - **Water Supply**

NIST-Station Night Club



NIST-Station Night Club



Places of Worship



Places of Worship

**New
Existing
Additions**

Show Must Go On



What can you do?

- Land use permit
 - **Compliance with codes**
 - **Design professional required**
- Conditional use permit
- Coordinate with local fire department
 - **Contact the fire chief**
- Assistance from SFMD
- County fire code official

Questions

